

# Sunón



## Sunón

### Headquarter & Experience Center

Add: Sunon Central Business Building, No.200 Shimin Street, Qianjiang CBD, Hangzhou, Zhejiang Province, China

### Russia Branch & Experience Center

Add: Sky Masnion, No.118 Varshavskoe Road, Moscow

### European R&D Center



Add: Brunnenstrasse 156, 10115 Berlin, Germany

### USA Headquarter & Experience Center

Add: 525 Technology Drive Suite 150 Irvine CA.92618, USA

### India Branch & Experience Center

Add: Floor I & II, 643, Rd Number 36, Aditya Enclave, Venkatagiri, Jubilee Hills, Hyderabad, Telangana 500033, India

    @sunonfurniture

[www.sunonglobal.com](http://www.sunonglobal.com)

[info@isunon.com](mailto:info@isunon.com)



## BATMANN



CLAUDIO BELLINI DESIGN

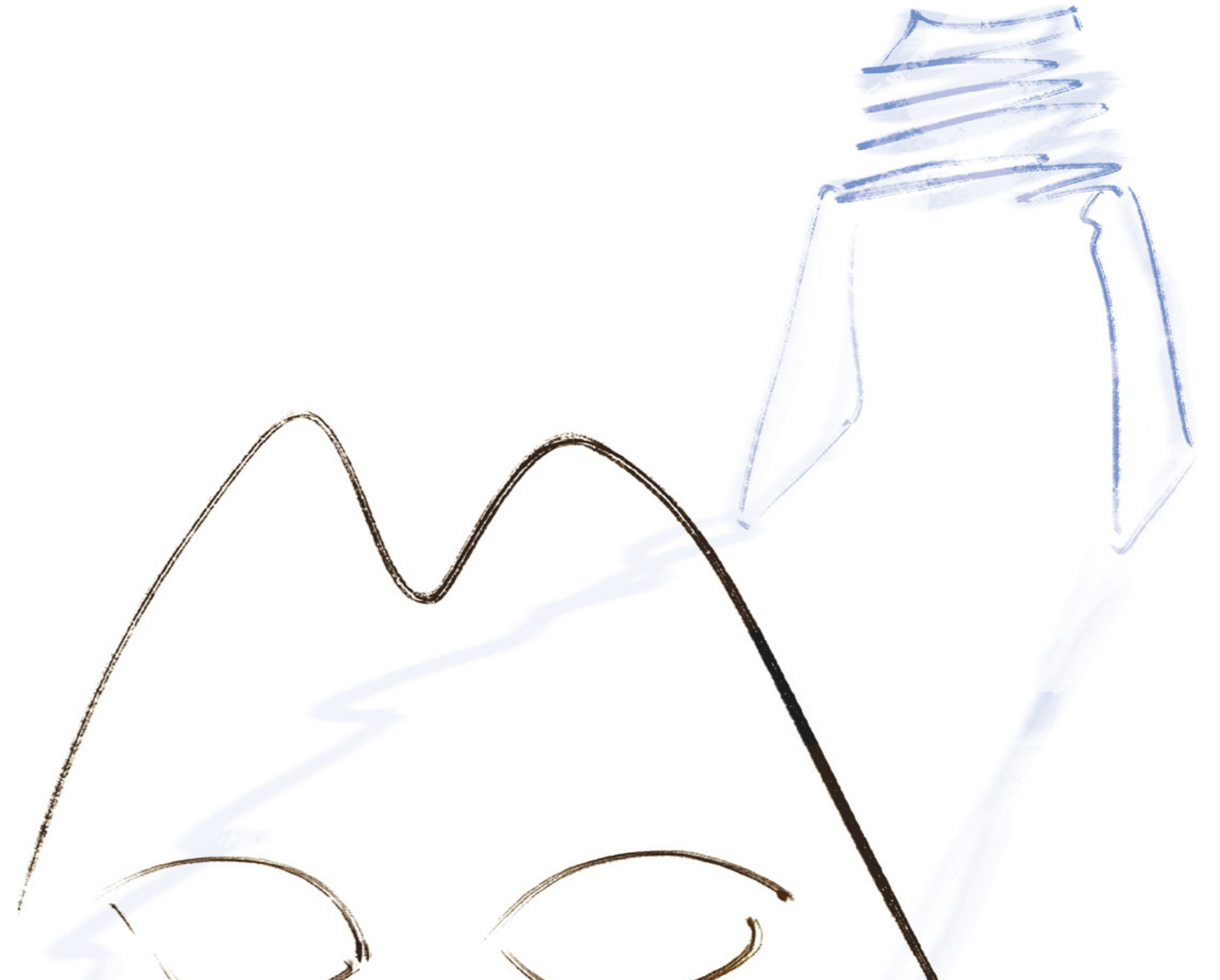
Inspired by those beams of light shining in the darkness, Batmann is an elf of night, visualizing your imagination by turning it into a lifestyle.

"The process of design includes seeking, discovering, and creating beauty, which is an innate mission for designers."

— Designer of Batmann  
CLAUDIO BELLINI DESIGN

### About Inspiration

From the growth of grasses,  
we feel the charm of spring;  
From the bitten apple,  
we witness the story of Apple;  
From the secret of locus swarm,  
we developed the collision avoidance system;  
What would we get from those beams of light  
shining in the darkness?



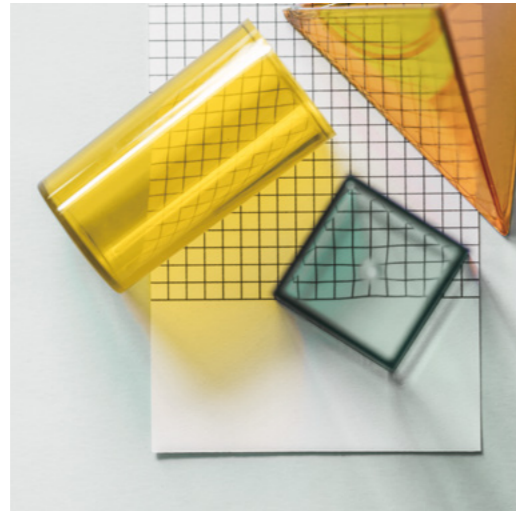
**Born from beauty, sparking inspiration.**

When you are comfortably seated, you may see the world differently;  
from colors reflected in your eyes, you can feel the burst of inspiration.  
Be it a beam of light, enlightening you with the touch of love;  
or a layer of shadow, connecting you with the world.  
Just sit here, feel it, and get inspired.





Light transparent chair, mind inspiring.  
 An artwork of light and colors, broadening your thoughts. Reflective PC material for the chair base is 16.5mm-thick, indeformable and durable, and is also widely used in automobile production. Coloring is uniform and bright, endowing the space with imaginary charm.



### Trendy Colors for Trendsetters

Always remember to add some bright colors to your office life.

Red, black, yellow, white, coral, these colors of natural elements, make the chair beautiful inside and out.

Even the screws are of the same color of the chair body, you just know it will set a new trend from the tiniest detail.





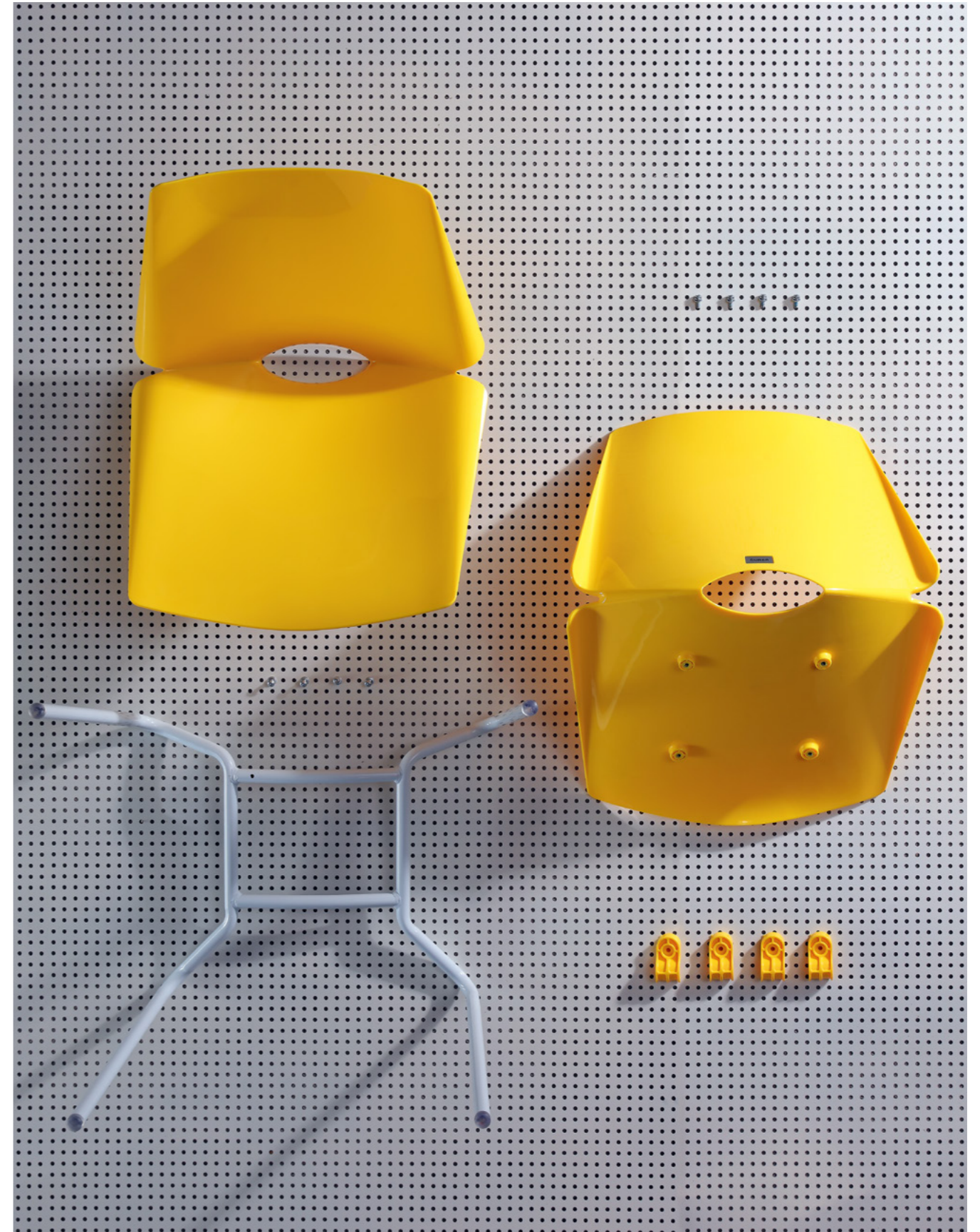
### **2 Leg Types Available for Choice**

195 steel leg, an expression of minimalism with metal.  
With four points in one plane, this four-forked base  
draws a picture of conciseness,  
With two lines in one plane, the cantilever base is a  
symbol of steadiness.  
With both passing the 100kg-load-bearing test, your  
safety is guaranteed.



**(Dis)assembling, Easy Peasy!**

Smoothly shaped cambered back frame, shining with a flow of light;  
Loft-style steel feet, concise and light;  
Four-screw fastening, taking only three minutes to put together!

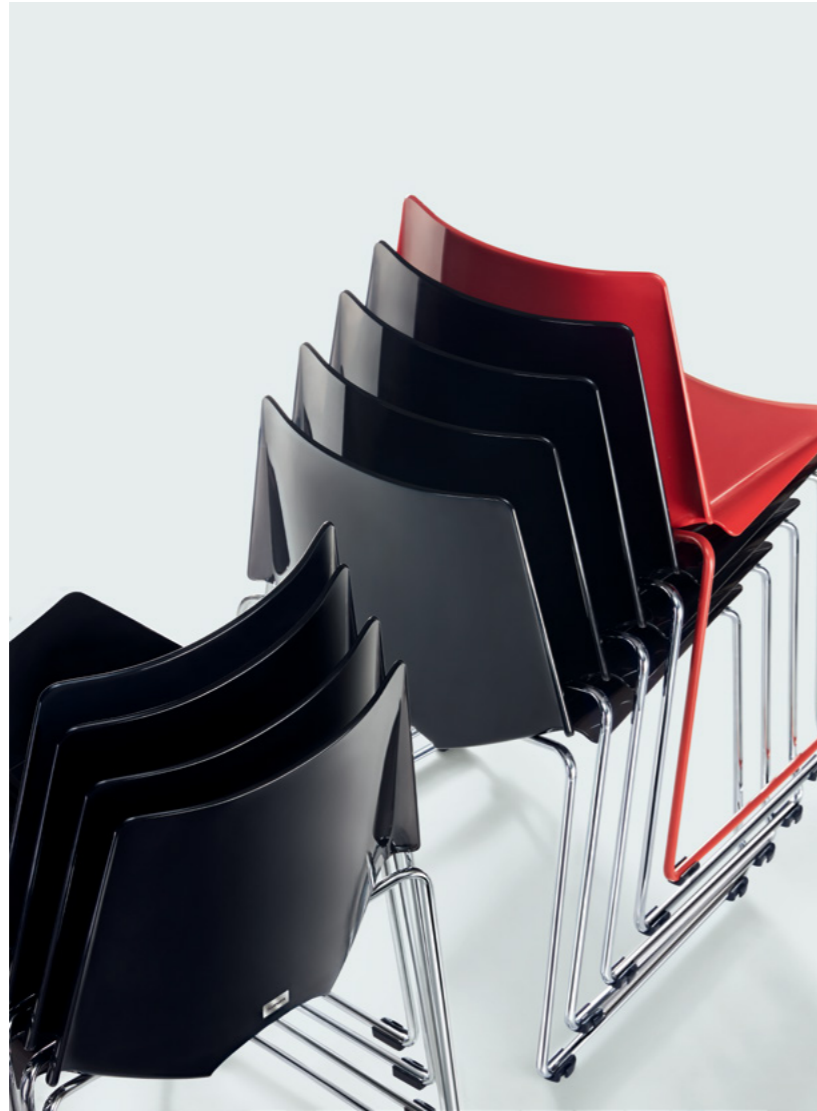


### Open a Window, Get a Handle

The arch-shaped hole in the back is the mouth of the spring of dynamism. It's a handle as well as a ventilation opening. With that, you can manipulate the space with one bare hand.







### Master of Stacking, Art of Storage

To make use of space to the maximum, stacking is the best way.  
Up to 10 Batmann can be stacked together and moved together easily with a trolley.  
Such interaction may be a good way to enhance your friendship.



Here comes the morning meeting on Monday.  
Hurry, just grab the red chair you like.  
Enough to make your eyes sparkle.  
With ideas popping up in your head,  
you surely have the presentation today well in hand.





This is a game for master-hands.  
The flame of thoughts is burning brightly,  
intriguing your thirst for new ideas.  
Hesitate no more, get your chair, join them!



## Specification



CBN10GS  
W590\*D505\*H775(mm)



CBN11GS  
W585\*D515\*H775(mm)



CBN12GS  
W590\*D505\*H775(mm)



CBN13GS  
W585\*D515\*H775(mm)



CBN15GS  
W585\*D515\*H775(mm)

## Material

## CBN10GS / CBN11GS

## Colors of Back Frame



Black    Greyish White    Lemon Yellow    Coral    Red

## Colors of Understructure



Ink Black    Coral    Marsala Red    Warm White

## CBN12GS / CBN13GS

## Colors of Back Frame



Black    Greyish White    Lemon Yellow    Coral    Red

## Colors of Understructure



Electroplated Base

## CBN15GS

## Colors of Back Frame



Black    TP-ZP10H

## Colors of Understructure



Ink Black