

Sunón



Sunón

European R&D Center

Add: Brunnenstrasse 156, 10115 Berlin, Germany

Sunon Mexico Manufacturing Base & Experience Center

Add: Calle Palomas No. 201, Parque Industrial Hofusan, Salinas Victoria, Nuevo León CP 65500

USA Branch & Experience Center

Add: 525 Technology Drive Suite 150 Irvine, CA.92618

Singapore Branch & Experience Center


Add: #01-02 R Building, 18 Robinson Road, Singapore 048547

India Branch & Experience Center

Add: Floor I & II, 643, Rd Number 36, Aditya Enclave, Venkatagiri, Jubilee Hills, Hyderabad, Telangana 500033, India

Headquarters & Experience Center - Sunon Technological Innovation Park

Add: No.1666 Zhixing Road, Xiaoshan District, Hangzhou, Zhejiang, China

    @sunonfurniture

www.sunonglobal.com

info@isunon.com



H2



Yoga-based Spine-friendly Chair



Ergonomic, relaxing, spine-friendly.
H2 is designed with edgeless comfort.



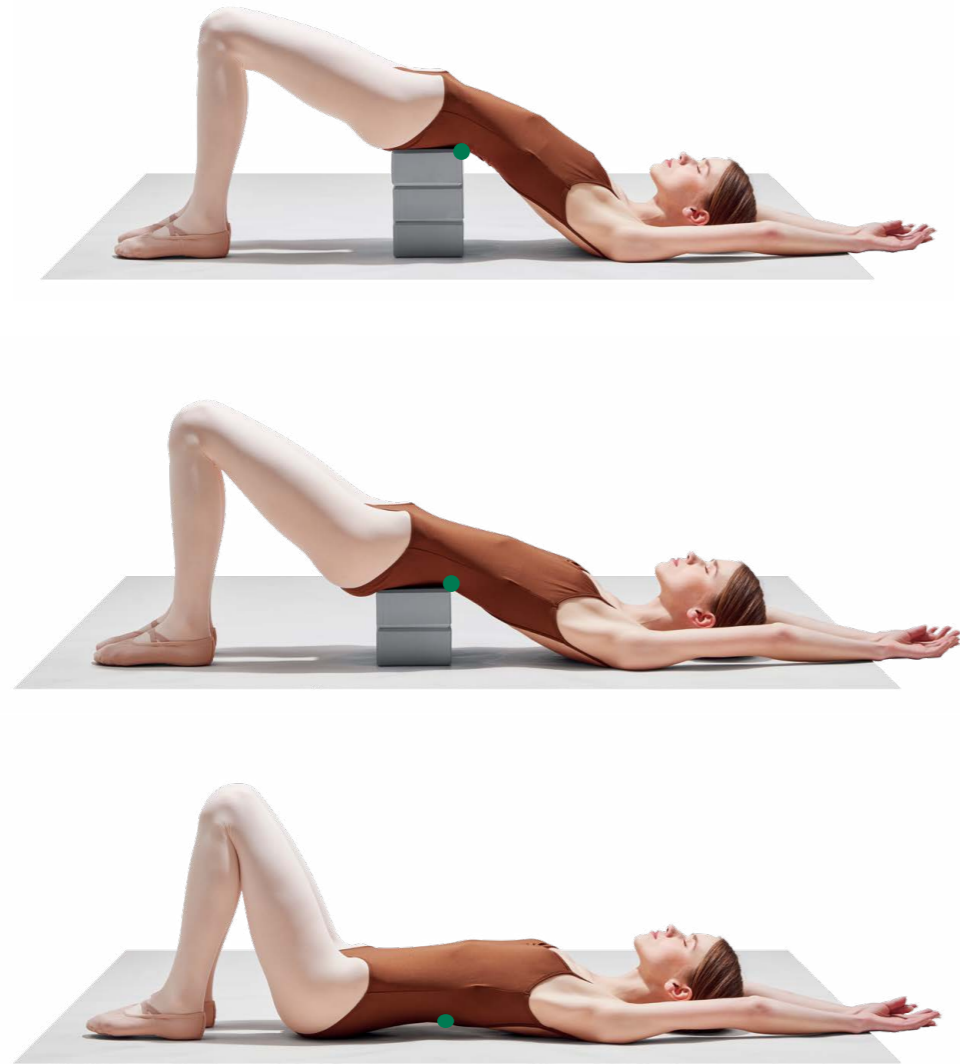
A Masterpiece Of Ergonomics

Sunon spent 3 years researching 4000 sitting posture samples and developed this pioneering 4.0 dual-back chair, which conforms to different people's bodies to provide dynamic spinal support.

H2 offers common but differentiated support for cervical vertebra, thoracic vertebrae, and lumbar vertebra, shielding you from the hazards caused by sedentary working.



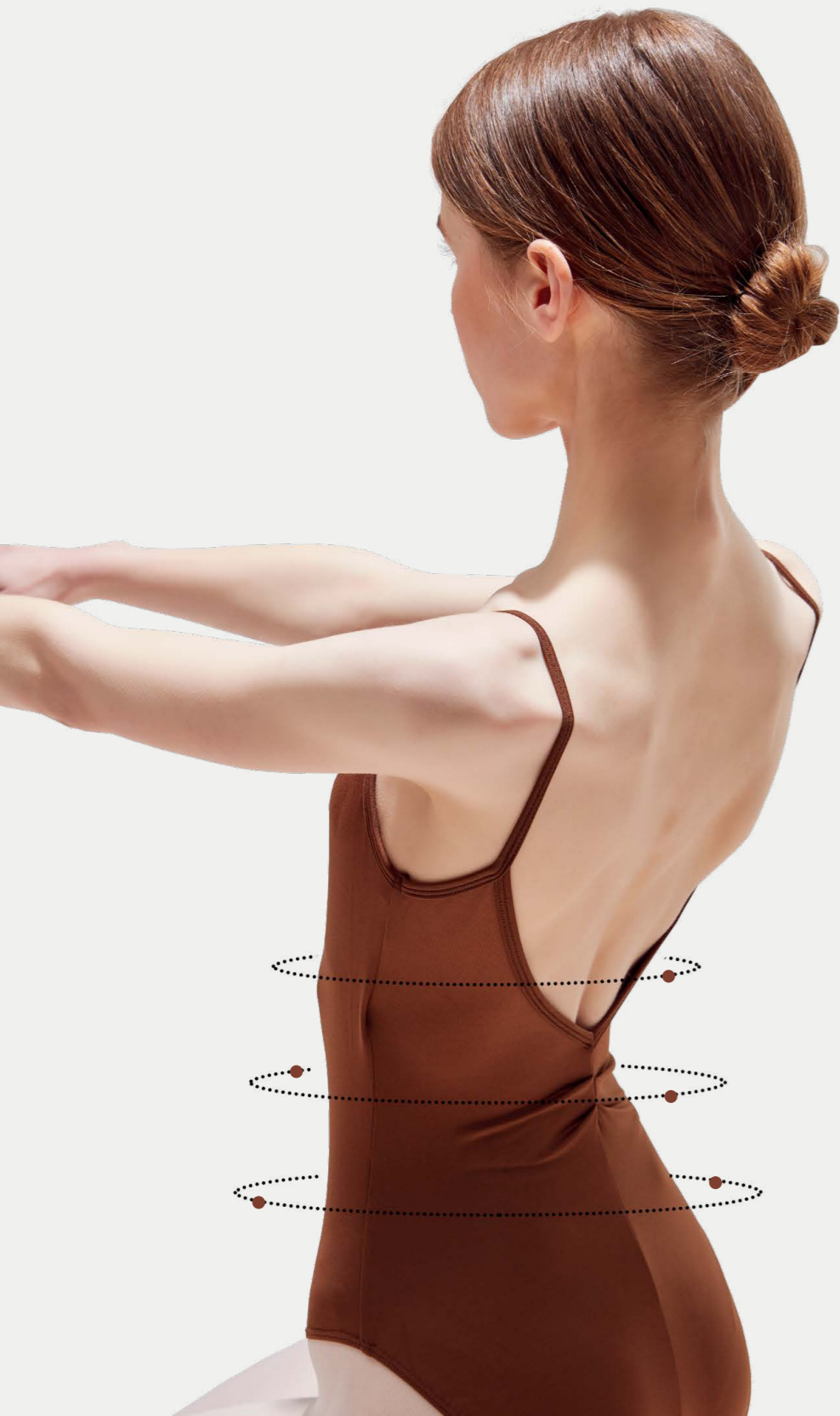
- H2 Chair



With bridge posture integrated

Just like spines lift up as yoga bricks pile up, the lumbar support allows edgeless gear transition to accommodate different working modes, achieving the flowing movement of spines under various gears.





Set your own comfort

The pioneering 3D dynamic dual-backs support the fatigue-prone 4th-5th section of lumbar vertebrae, reducing the chance of lumbar subsidence and hunchback, and effectively preventing spine-related problems.





Move with your body

30-degree synchronous swing from side to side makes H2 fit your body like a glove, activating the hidden functions of your waist and relieving your pressure effortlessly.

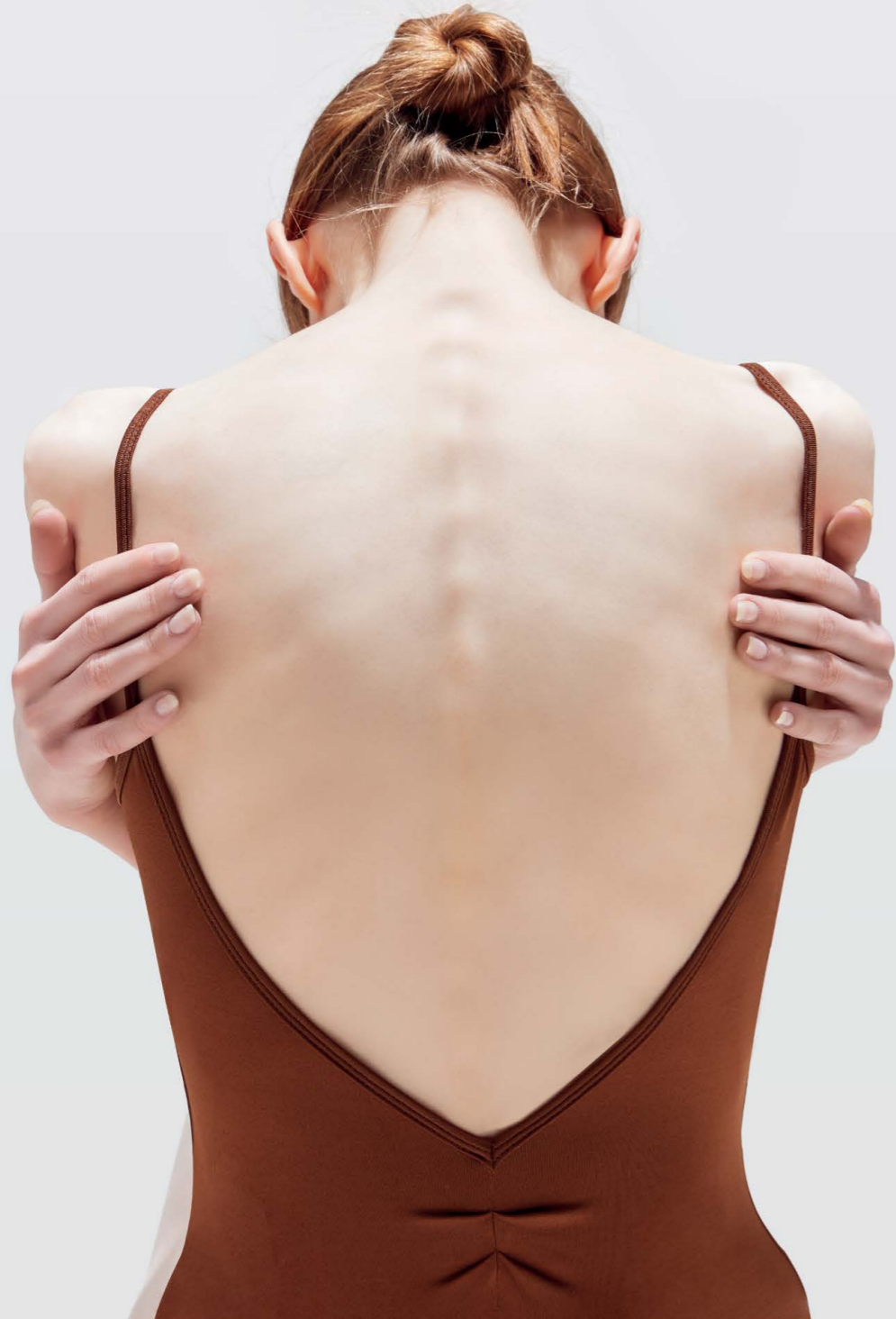




- H2 Chair

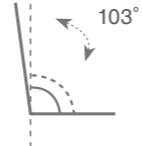
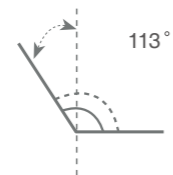
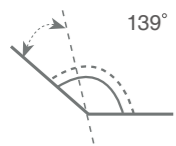
Comfortable throughout working hours

According to sitting biomechanics, the strong bracing provided by lumbar support helps your lumbar vertebrae to maintain a natural curvature and mitigate the stress felt by it.



Flexible tilting adjustment

139° 4-gear tilt allows you to personalize your postures. 55mm seat depth adapts to people of all shapes and statures.



Small Angle ◀

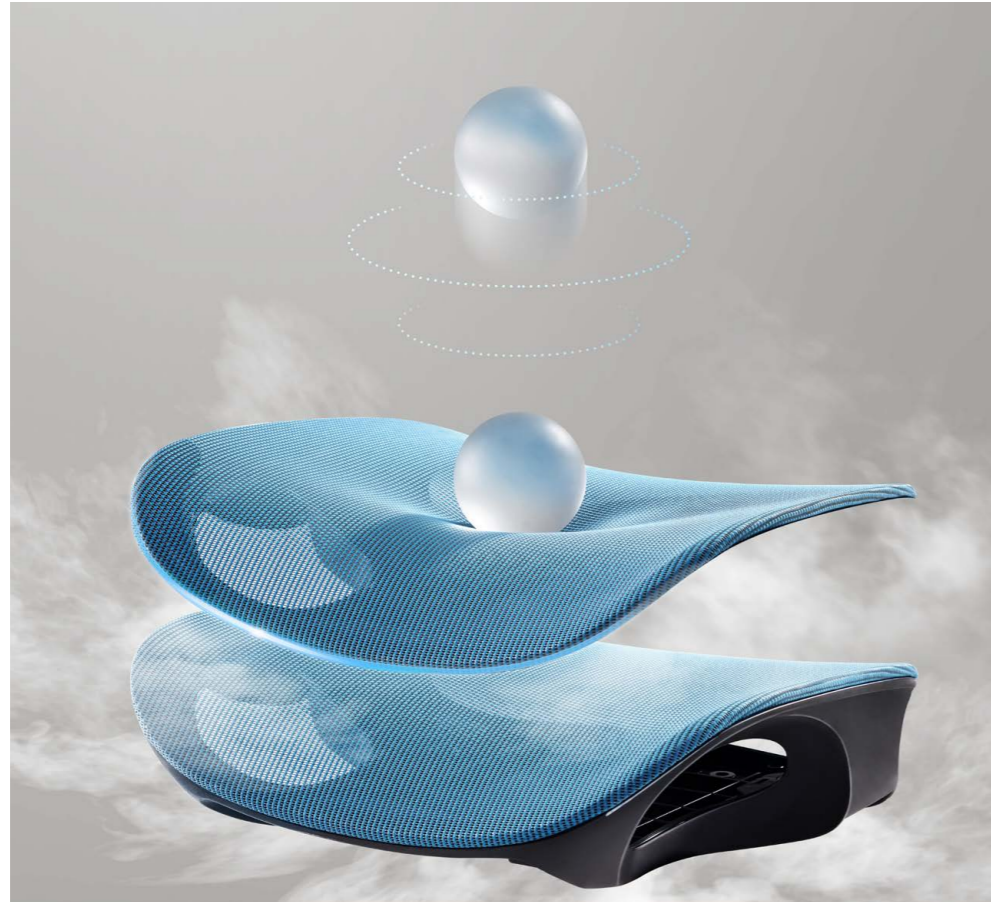
Spinal Disc Pressure

▶ Large Angle

Data Source: Sunon Group Health Office Research Center







Flexible tilting adjustment

139° 4-gear tilt allows you to personalize your postures. 55mm seat depth adapts to people of all shapes and statures.





Function



4D armrest - forward and backward 40mm



4D armrest - 30° rotation



4D armrest - leftward and rightward 15mm



4D armrest - up/down 83mm



3D headrest - up/down 53mm



3D headrest - forward/backward 135°



3D headrest - 110° rotation



seat depth - 55mm adjustment.

Specification



CHT80SW
W705*D680*H1165(mm)



CHT81SW
W705*D665*H1160(mm)



CHT60SW
W705*D670*H1000(mm)



CHT82SW
W705*D650*H1165(mm)



CHT61SW
W705*D630*H1000(mm)



CHT62SW
W700*D675*H1000(mm)



CHT83SW
W705*D680*H1165(mm)



CHT84SW
W705*D665*H1160(mm)



CHT63SW
W705*D670*H1000(mm)



CHT85SW
W705*D650*H1165(mm)



CHT64SW
W705*D630*H1000(mm)



CHT65SW
W700*D675*H1000(mm)



CHT86SW
W705*D680*H1165(mm)



CHT87SW
W705*D665*H1160(mm)



CHT66SW
W705*D670*H1000(mm)



CHT88SW
W705*D650*H1165(mm)



CHT67SW
W705*D630*H1000(mm)



CHT68SW
W700*D675*H1000(mm)



CHT92SW
W700*D655*H1150(mm)



CHT94SW
W700*D655*H1145(mm)



CHT96SW
W700*D655*H1135(mm)



CHT20SW
W700*D645*H970(mm)



CHT91SW
W700*D655*H1150(mm)



CHT93SW
W700*D655*H1145(mm)



CHT95SW
W700*D655*H1135(mm)



CHT21SW
W700*D645*H970(mm)



CHT97SW
W700*D655*H1150(mm)



CHT98SW
W700*D655*H1145(mm)



CHT99SW
W700*D655*H1135(mm)



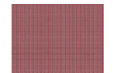
CHT22SW
W700*D645*H970(mm)

Material

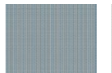
Backrest / Headrest



CW-HY10B



CW-HY30B



CW-HY80B



CW-HY21B



CW-AP21

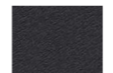


CW-AP27

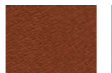
Seat / Footrest



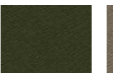
SM-PC10B



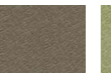
SM-PC27B



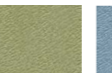
SM-PC51B



SM-PC62B



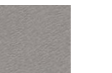
SM-PC11B



SM-PC60B



SM-PC83B



SM-PC21B



CW-AP21



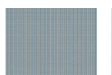
CW-AP27



CW-HP10



CW-HP30



CW-HP80



CW-HP21



TP-PV10



TP-PV20H

Given that products may be updated constantly, no further notice will be given in regard of changes in specification, and the real product shall be considered as final.