

Sunón

Headquarter & Experience Center

Add: Sunon Central Business Building, No.200 Shimin Street, Qianjiang CBD, Hangzhou, Zhejiang Province, China

Russia Branch & Experience Center

Add: Sky Masnion, No.118 Varshavskoe Road, Moscow

European R&D Center

Add: Brunnenstrasse 156, 10115 Berlin, Germany

USA Headquarter & Experience Center

Add: 525 Technology Drive Suite 150 Irvine CA.92618, USA

India Branch & Experience Center

Add: Floor I & II, 643, Rd Number 36, Aditya Enclave, Venkatagiri, Jubilee Hills, Hyderabad, Telangana 500033, India

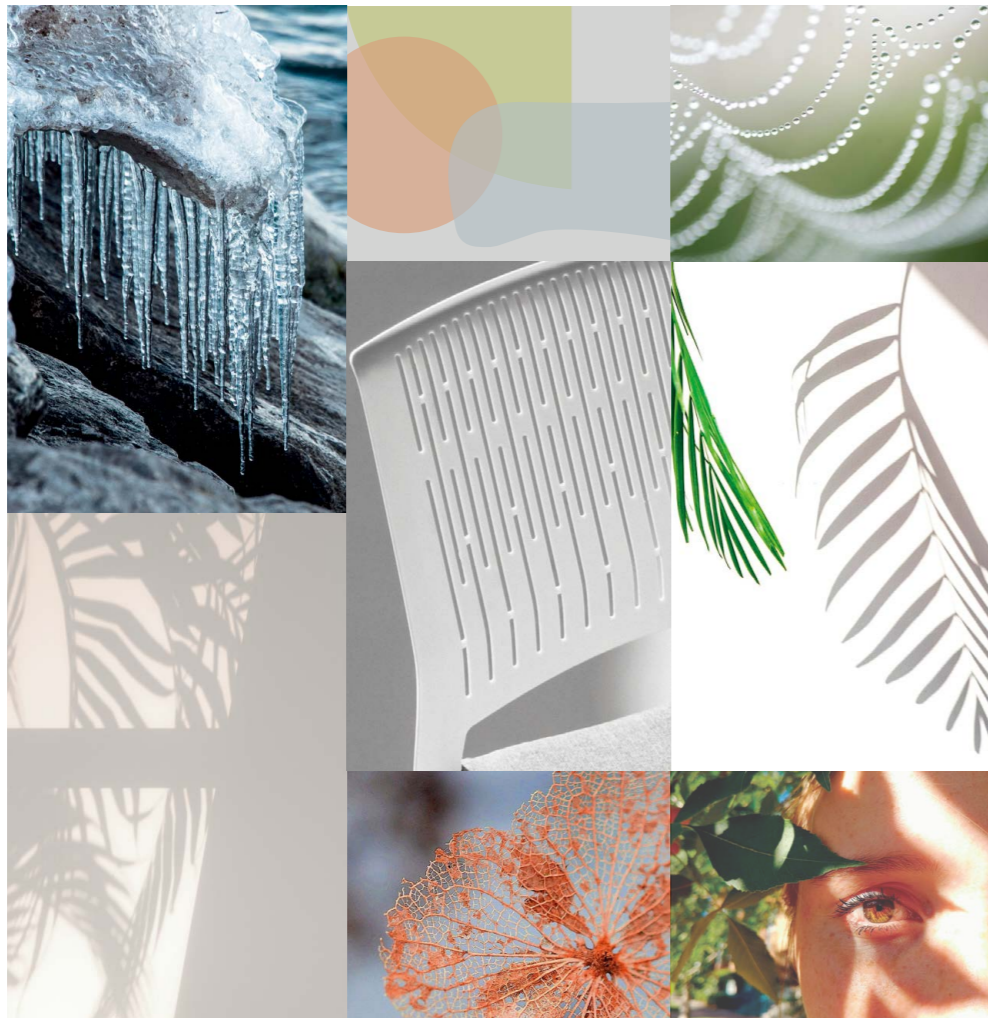
    @sunonfurniture

www.sunonglobal.com

info@isunon.com



MAGNA



||

Resonate with light and shadow

||

The diversified colors presented in the four seasons together with the elusive lights and shadows bring a fascinating world into being. Also, the participation of air, water, and nutrients play a significant role in the formation of a complete ecosphere.

When was the last time you appreciate the blossom of flowers, the chirping of birds, the rustling of wind, the tittering of rain and the swirling of snowflakes? It is beautiful scenes of thriving vitality that make us fully aware that we are living on this earth, alive and kicking. Surrounded by such a beautiful scenery, you can take a break from the hustle and bustle of the metropolitan lives and enjoy a moment of relaxation.

Magna - talk with light, frolic with shadow and resonate with color. It injects a slew of vigor into spaces and cuddles you with natural freshness.



Magna - Genki Forest Chair



II

Warm in winter and cool in summer



Configured with fluffy back cushions and seat cushions to satisfy different needs; Bring you a cool and airy feeling in summer and a soft and warm feeling in winter.



||

Each season has its own color

Black, green, orange, and white...the natural color tune of Magna brings four seasons into rooms. A rich of colors add new dimensions to spaces and constitute a chic aura. Working in this space, you'll get refreshed immediately.



Bionics is ingeniously applied in the design of Magna. The eye-catching legs imitate the claws of birds and display a slim outlook, making the chair stackable and easy to move with. The elegant curves neutralize the stiffness of spaces, bring visual lightness to any environment and help to create a cozy and casual atmosphere. Besides, the excellent performance of Magna is BIFMA-certified.

Magna is as pleasing to look at as it is to sit in. The back and seat are one-piece molded using eco-friendly PP+GF materials, exemplifying our pursuit for sustainability. The smooth and fluent S line fits the curve of the backbone and gives strong support for your lumbar and back, thus helps to relieve the fatigue caused by a sedentary lifestyle.



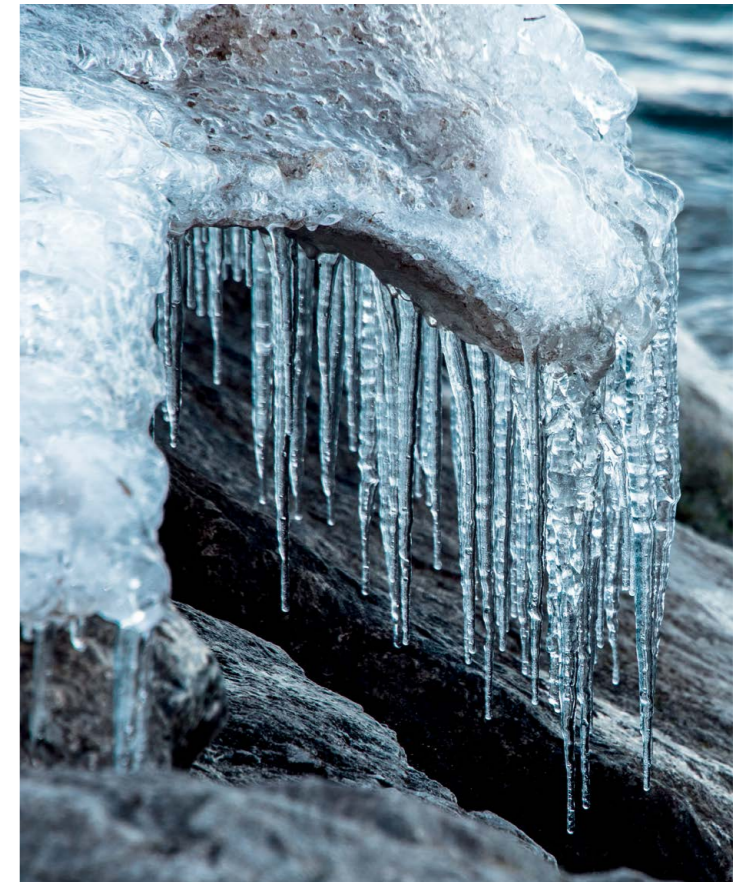


Orange as maples in the autumn.



II White as snow

The warm white highlights the purity of this room. No matter you want to savor a cup of coffee or have a rest, PA casters give you distraction-proof tranquility; The height of stools can be adjusted based on the height of users and tables.





Expressive yet restrained, minimal yet compelling. Magna multi-functional chair pursues the integration of functionality and simplicity. Available in star bases, sled bases, four legs, stools as well as a palette of fresh, lively colors, it permits a wide range of arrangements and offers boundless flexibility.

Magna is beautiful as it is useful. The minimalist-style hollow-out design allows the body to breathe, so moisture and heat dissipate, and the body remains cool. The stool configuration adds visual lightness and fuses comfort and elegance to any environment. All lines are precisely defined to create a harmonious whole. Magna perfectly accommodates meeting, training, and leisure spaces and can be used in coffee bars, departure lounges, cafeterias, and even homes.

II

Fresh seating as you wish

As a fruit of the integration of color and nature, Magna exemplifies the power of minimalism and the beauty of modern fashion.



Product Specifications



CMG10GS
W565*D535*H820(mm)



CMG11GS
W565*D535*H820(mm)



CMG12GS
W525*D525*H820(mm)



CMG13GS
W525*D525*H820(mm)



CMG14GS
W570*D520*H815(mm)



CMG15GS
W570*D520*H815(mm)



CMG60BS
W475*D520*H795(mm)



CMG61BS
W475*D520*H795(mm)



CMG62BS
W475*D545*H970(mm)



CMG16GS
W475*D475*H790(mm)



CMG30PJ
W400*H230(mm)



CMG31PJ
W580*H455(mm)

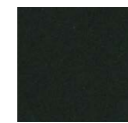
Back Frame Color

CMG10/11/12/13/14/15GS
CMG60/62BS



Coral Morandi Green

CMG10/12/14GS
CMG61BS



Ink Black

CMG10/12/14/16GS
CMG60/62BS



Warm white

Base Configurations

CMG10/12/14/60/62/16GS



Electroplating tripod

CMG61GS



Nylon tripod

CMG11/13/15GS



Morandi Green Tripod



Coral Tripod

Back Cushion/Seat Cushion Material



TM-CI29 TM-CI21 TM-CI35 TM-CI50 TM-CI42 TM-CI30 TM-CI60 TM-CI83 TM-CI80 TM-CI81 TM-CI82 TM-CI62



TM-CI27 TM-CI10