

# Sunon

## European R&D Center

Add: Brunnenstrasse 156, 10115 Berlin, Germany

## Sunon Mexico Manufacturing Base & Experience Center

Add: Calle Palomas No. 201, Parque Industrial Hofusan, Salinas Victoria, Nuevo León CP 65500

## USA Branch & Experience Center

Add: 525 Technology Drive Suite 150 Irvine, CA.92618

## Singapore Branch & Experience Center


Add: #01-02 R Building, 18 Robinson Road, Singapore 048547

## India Branch & Experience Center

Add: Floor I & II, 643, Rd Number 36, Aditya Enclave, Venkatagiri, Jubilee Hills, Hyderabad, Telangana 500033, India

## Headquarters & Experience Center - Sunon Technological Innovation Park

Add: No.1666 Zhixing Road, Xiaoshan District, Hangzhou, Zhejiang, China

    @sunonfurniture

[www.sunonglobal.com](http://www.sunonglobal.com)

[info@isunon.com](mailto:info@isunon.com)



STEELBOX II



## STEELBOX II.

Steelbox II is the masterpiece cabinet system presented by Sunon with full-course independence in terms of R&D, manufacturing, and logistics. The steel product manufacturing base where Steelbox II is produced is located in Hangzhou, the E-commerce capital of China, and imported advanced manufacturing equipment and collected talents home and abroad. Intelligent digital operations help establish the service system featured by quality control, cost management, delivery guarantee, and personalize customization, all for creating value for clients.

# STEELBOX

## UPGRADE YOUR STORAGE INTELLIGENCE MAKES THINGS MORE CONVENIENT

If we like to use lockers like building blocks, only steel storage cabinets can fulfill the needs. Minimal placing area, more storage space, and ultimate space utilization.

To prevent rust and yellowing caused by light exposure, precise steel craftsmanship is required. STEELBOX uses Italian-imported Salvagnini bending technology and WAGNER automatic powder coating for meticulous craftsmanship and durability in different temperatures and humidity.

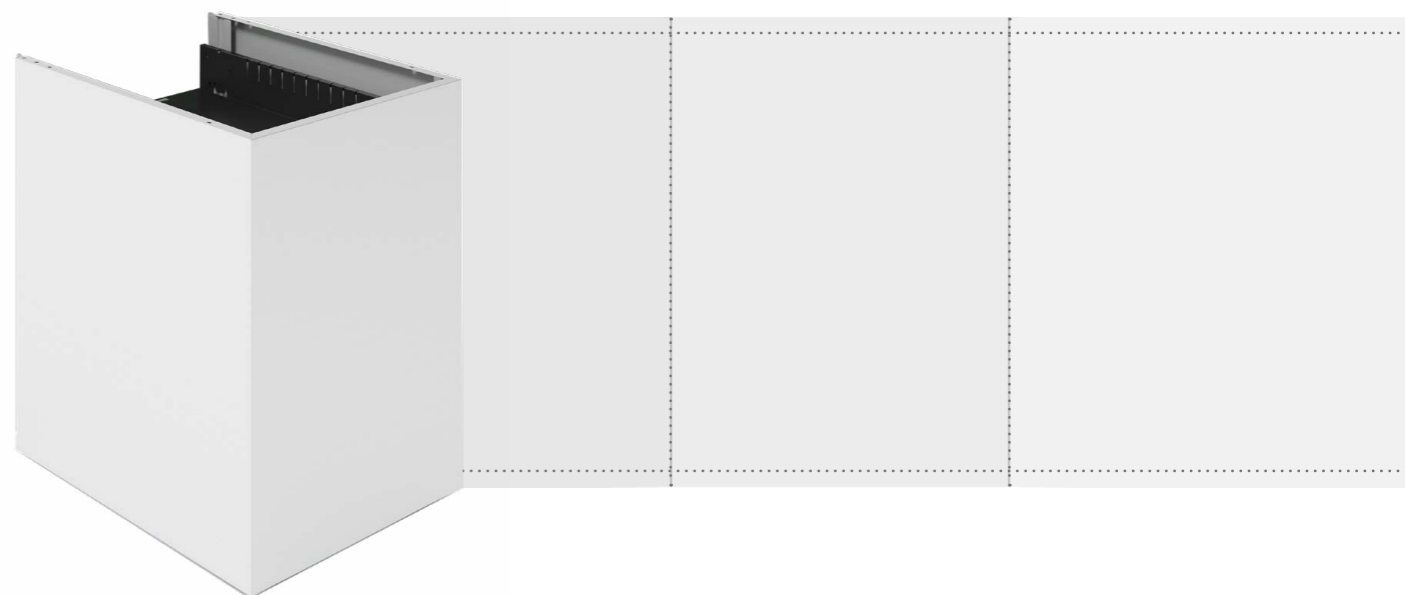
Upgrade your storage cabinet for a safer and more efficient storage experience with smart features like convenient access and visual management.





### Three-in-one Smoothness

Steel panels on both side and the back are one-piece made, so there will be no trouble of welding projections that cause mutual abrasion with objects or drawers, or gaps difficult to clean.





### 6.8mm-thick Top Board, Sheet yet Strong

Steelbox adopted Italian Salvagnini bending equipment for high-precision processing. After a series of testing, the top edge thickness is narrowed down from 25mm to the limit of 6.8mm. The top edge is of the same thickness with the side edge, making the cabinet more delicate and light in top.





## HARMONIOUS TONES

Cabinet body available in 2 colors and cabinet door available in 6 colors, fashionable and matching.







### Delicate planter adds mini-forest

W900mm/1200mm\*H250mm Steelbox planters are innovative designs which turn scattered greenery into a mini-forest in the office. 1.5 gallons/2 gallons of flowerpots can be combined inside and together create a small ecology system, refreshing your eyes, mind and breath.

### Artistic Inward Handle

The inward handle has a concise outer shape and is designed with wave-shaped touch to fit user's fingers, offering smooth opening and closing.





#### Wood grain laminate/steel top panel

The top panel has several optional grain patterns to achieve harmony with the steel cabinet body.

## MODERN, SECURE, AND ARTISTIC

#### Quality WT smart lockset

The cabinets are equipped with a WT smart lockset for document confidentiality. You may set four digit as the password to turn common use into private use.





# RIGHT CABINETS ACCELERATE EFFICIENCY.

The chairs and tables are main servers in the office, and cabinets act as space planner: they may stand between workstations as light separation or stand against the wall to provide shared storage.



## Welcoming Space with Proper Display

Reception spaces and common reading spaces need to be thoughtful and welcoming. Opening half of the cabinet for shared reading and interior decoration can help create easy and welcoming atmosphere during visitors' stay here.

# "UP"-GRADE OFFICE STORAGE

Organized storage beyond your imagination



There are always files and documents that you don't use them often but may need them in temporary cases. The 2140mm-high cabinet set provides a large storage capacity on high and low floors to better sort out documents based on their priorities and use frequencies.



## BEAUTY OF HAZINESS



### Glue Edge for Higher Safety

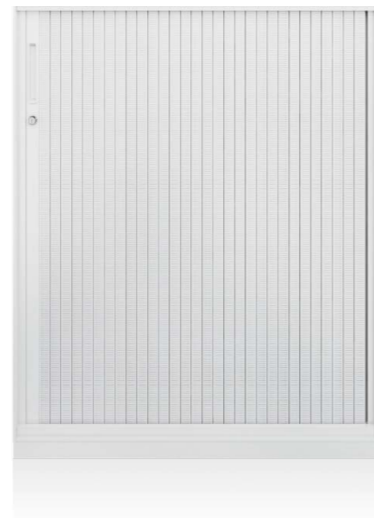
Steel cabinet plus glass door, storage is clearer and more organized than ever; impedance glue added on the edge of the glass door enhanced the safety of opening and closing.



## LOCKABLE ROLLING DOOR



In addition to the wood grain top board, Steelbox has PP patterned rolling door to match with the bright and clean steel. The collision of different materials endows the space with unique rhyme.



The acoustic cotton padded inside the door ensures low sound during opening and closing, and the lock guarantees document safety when needed.









# MAILBOX CABINET

The interchange station of information



1



2

## Mailbox Cabinet

The interchange station of information  
Mails, categorized documents, and forms need their exclusive interchange stations. Steelbox mailbox cabinets serve this purpose perfectly by providing an opening for anything delivery and organized internal space for people to manage.



## EXCLUSIVE USE



Bank and education scenarios may need cabinets used as personal lockers. Steelbox locker cabinets are designed with square holes to maintain good ventilation and insertable name tag slot.

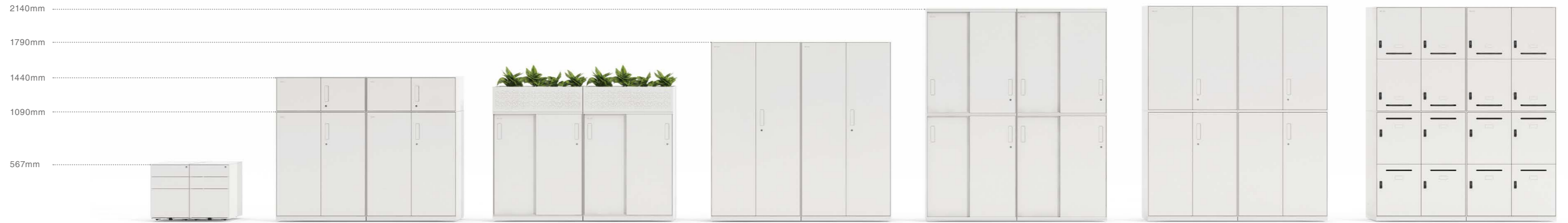






# PROGRESSIVE STORAGE IN LIMITED AREA

The 3H (1090mm) bottom cabinet can be overlapped with 3H/2H (700mm)/1H (350mm) cabinets such as slide door cabinets, drawer cabinets, wardrobe cabinets. The cabinets can be easily matched as the functions are freely selected. Utilization of the space is increased as personal and sharing requirements are fulfilled.



# CLEAR MIND AND AGILE ACTIONS IN CLEAN AND ORGANIZED SPACES



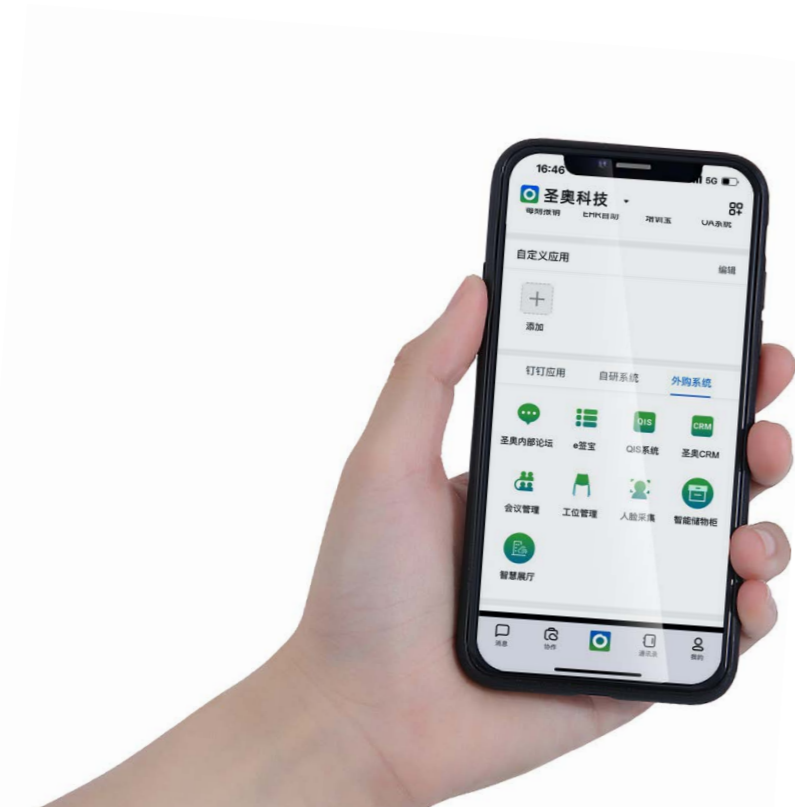
Steelbox includes a bed cabinet, so that employees can enjoy a quality noon nap and be recharged for the afternoon. The 1950mmx570mm bed has eight feet and is equipped with comfortable setting sponge mattress.





# A NEW CHAPTER IN INTELLIGENT STORAGE

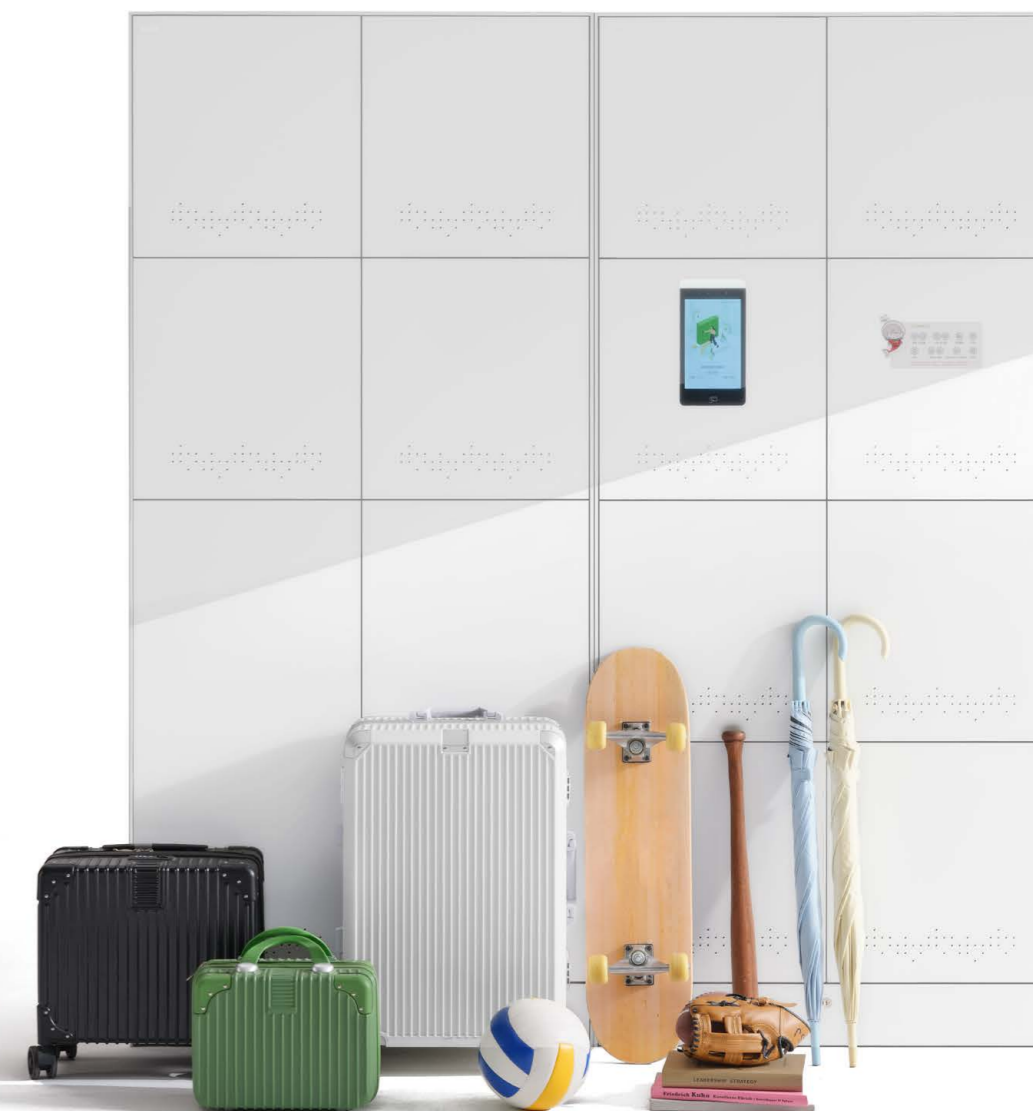
With the advent of the era of Smart Everything, storage cabinets are experiencing a brand-new upgrade towards intelligence. They provide safe and convenient access, efficient management, and remote control through mobile devices. The Steelbox Smart Cabinet Series offers you a comfortable and smooth interactive experience.





## FLEXIBLE COLLOCATION

Two sizes available, depending on your needs.  
Small Locker: 410mm \* 420mm \* 465mm, Fit for commuter bags and small personal items.  
Large Locker: 410mm \* 420mm \* 930mm, With an adjustable compartment inside, easy to accommodate luggage up to 22 inches.







# HANDS-FREE, HASSLE-FREE

Shared intelligent lockers ensure safe personal storage. Reserve and access anytime via the WeChat mini program.

# SAFE AND EFFICIENT RECOGNITION



With multiple ways to open the locker, you can use a single method or a combination of configurations. Multi-layered security ensure that your belongings are safe and secure.



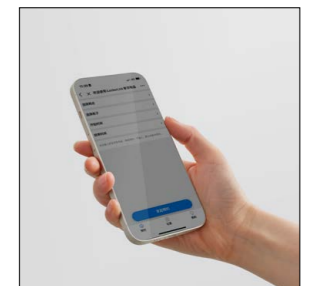
IC Card Recognition



Facial Recognition



Scan QR Code to Open



WeChat Mini Program





### Dedicated Locker, Personal Storage Butler

By using a locker instead of a wall, you can create a dedicated storage space on one side of the office area. This expands the storage area further and keeps the workspace tidy, allowing you to think more clearly.

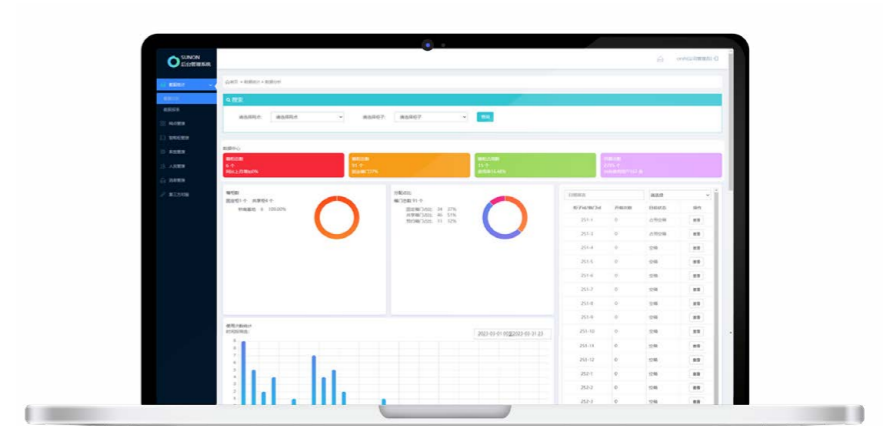




You can customize the locker with name card slots and delivery ports according to your needs, and choose from a variety of colors.

## ALL-IN-ONE DASHBOARD

Efficient management and resource allocation through remote cabinet control, data analysis and visual charts.



Specification



GC23-2.039059  
W390\*D599\*H715(mm)

GC24-2.039052/WF  
W390\*D523\*H567(mm)

GC24-2.039053  
W390\*D530\*H600(mm)

GC25-2.039052/K/WF  
W390\*D523\*H445(mm)

GC28-2.039052M  
W390\*D523\*H600(mm)

GC24-2.039052M  
W390\*D523\*H567(mm)

GC24-2.040053B  
W401\*D530\*H568(mm)

GC40-2.040059B  
W400\*D597\*H725(mm)

GC22L/R-2.100045  
W1000\*D450\*H632(mm)

GC22L/R-2.100045K  
W1000\*D450\*H632(mm)

GC22R/L-2.100045G  
W860\*D500\*H638(mm)

GC34-2.075/080/090/  
100/045  
W744\*D497\*H725(mm)  
W794\*D497\*H725(mm)  
W894\*D497\*H725(mm)

GC21-2.073050  
W730\*D500\*H725(mm)  
W994\*D497\*H725(mm)

GC21-2.068050  
W680\*D500\*H638(mm)

GC10-2.068050  
W680\*D497\*H725(mm)

GC20R-2.060115 /135  
GC20R-2.070115 /135  
W300\*D600\*H1142(mm)  
W300\*D600\*H1344(mm)  
W300\*D700\*H1142(mm)  
W300\*D700\*H1344(mm)

GC20L-2.060115/135  
GC20L-2.070115/135  
W300\*D600\*H1142(mm)  
W300\*D600\*H1344(mm)  
W300\*D700\*H1142(mm)  
W300\*D700\*H1344(mm)

GC80L-2.060192  
W300\*D600\*H1192(mm)

GC80R-2.060192  
W300\*D600\*H1192(mm)

GC26-2.070035  
W706\*D356\*H400(mm)

GC35-2.090045  
W900\*D450\*H350(mm)

GC36-2.090045  
W900\*D450\*H350(mm)

GC37-2.090045  
W900\*D450\*H700(mm)

GC38-2.090045  
W900\*D450\*H700(mm)

GC00-2.090045  
W900\*D450\*H700(mm)



GC33-2.090045  
W900\*D450\*H700(mm)

GC01-2.090045  
W900\*D450\*H1050(mm)

GC02-2.090045  
W900\*D450\*H1050(mm)

GC03-2.090045  
W900\*D450\*H1050(mm)

GC04-2.090045  
W900\*D450\*H1050(mm)

GC32-2.090045  
W900\*D450\*H1050(mm)

GC05-2.090045  
W900\*D450\*H1090(mm)

GC06-2.090045  
W900\*D450\*H1090(mm)

GC07-2.090045  
W900\*D450\*H1090(mm)

GC08-2.090045Y  
W900\*D450\*H1090(mm)

GC08-2.090045X  
W900\*D450\*H1090(mm)

GC08-2.090045  
W900\*D450\*H1090(mm)

GC90-2.090045  
W900\*D450\*H1090(mm)

GC98-2.090045  
W900\*D450\*H1790(mm)

GC97-2.090045  
W900\*D450\*H1790(mm)

GC95-2.0900513  
W900\*D515\*H1790(mm)

GC96-2.0900516  
W900\*D515\*H1790(mm)

GC91-2.120045  
W1200\*D450\*H1090(mm)

GC91-2.120045M  
W1200\*D450\*H1090(mm)

GC92-2.120045  
W1200\*D450\*H1090(mm)

GC93-2.120045  
W1200\*D450\*H1090(mm)

GC93-2.120045M  
W1200\*D450\*H1090(mm)

GC94-2.090045  
W1200\*D450\*H1090(mm)

GC27-2.09/1200045  
W900\*D450\*H200(mm)  
W1200\*D450\*H200(mm)

GFJ15  
W45\*D100\*H725(mm)

GFJ16  
W45\*D200\*H725(mm)

GFJ05.090045  
W876\*D426\*H10(mm)

GFJ05.120045  
W1176\*D426\*H10(mm)

GFJ03./068/086/154050  
W680\*D500\*H7(mm)  
W860\*D500\*H7(mm)  
W1540\*D500\*H7(mm)

GFJ03.090045/051/120045/B  
W900\*D450\*H12(mm)  
W900\*D515\*H12(mm)  
W1200\*D450\*H12(mm)  
W1200\*D450\*H7(mm)



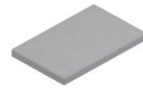
GFJ03.068/086/154050M  
W680\*D500\*H12(mm)  
W860\*D500\*H12(mm)  
W1540\*D500\*H12(mm)



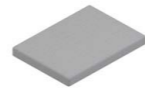
GFJ03.090051M  
W900\*D515\*H12(mm)



DCD.09/12  
W901\*D451\*H12(mm)



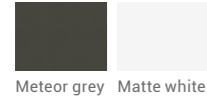
GFJ01.039052  
W390\*D523\*H50(mm)



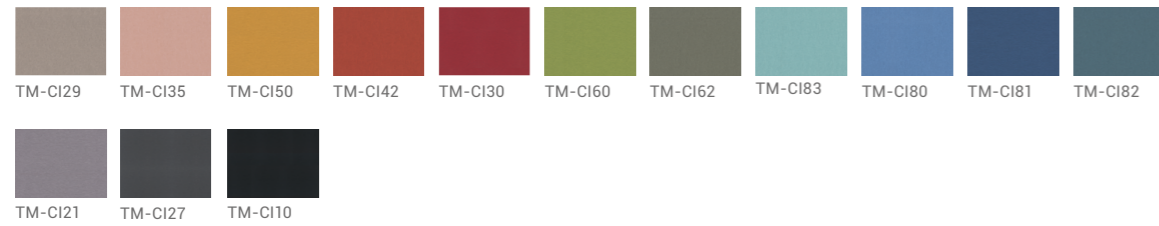
GFJ02.070045  
W700\*D450\*H50(mm)

Material

Side panel/Steel top board/Modesty Panel



Cushion fabric material

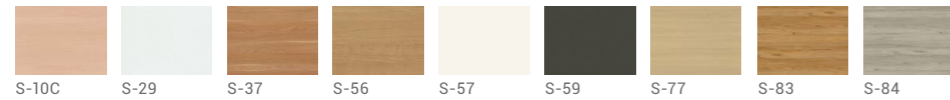


Cabinet door/handle/Drawer Fronts

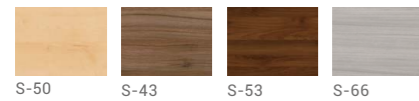


Wood grain color top board

Main promotion color



Optional color



Specification



GC60-2.200090/H  
W900\*D450\*H2000(mm)



GC61-2.200090  
W900\*D450\*H2000(mm)



GC62-2.200090  
W900\*D450\*H2000(mm)



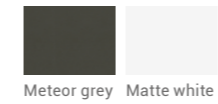
GFJ12.010008  
W104\*D85\*H30(mm)



GFJ13.010006  
W107\*D62\*H14(mm)

Material

Side panel



Cabinet door

